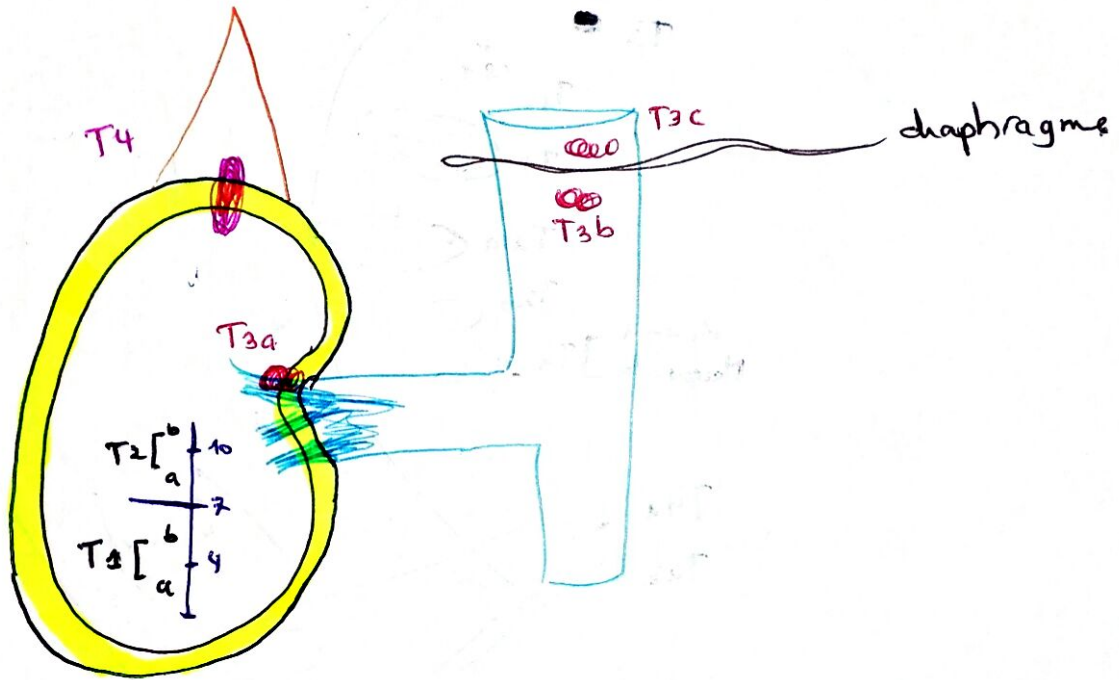


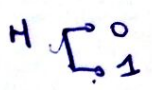
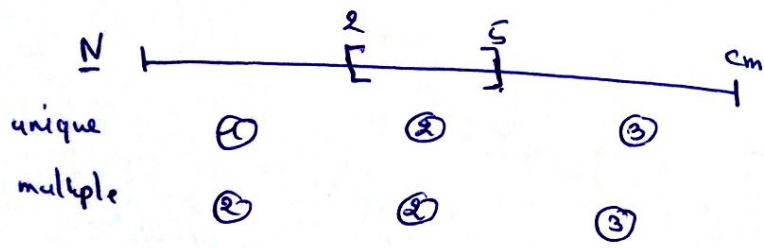
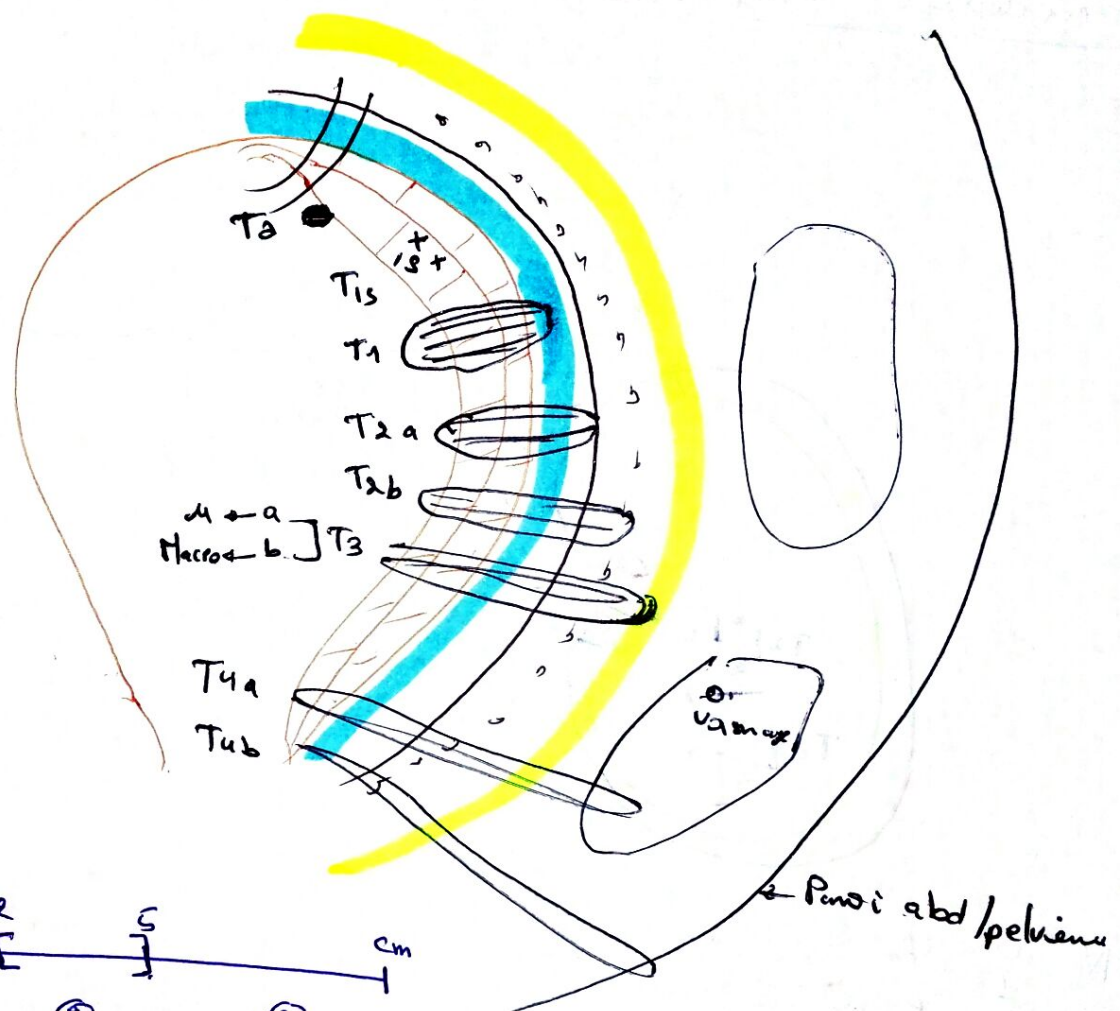
Cancer du Rein TNN (2009)



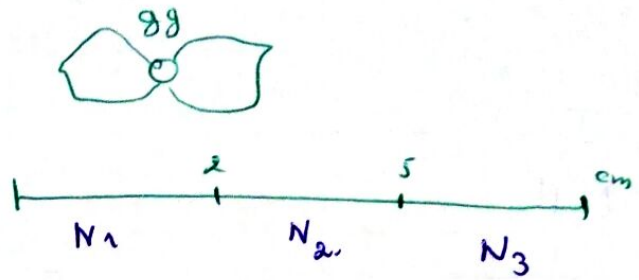
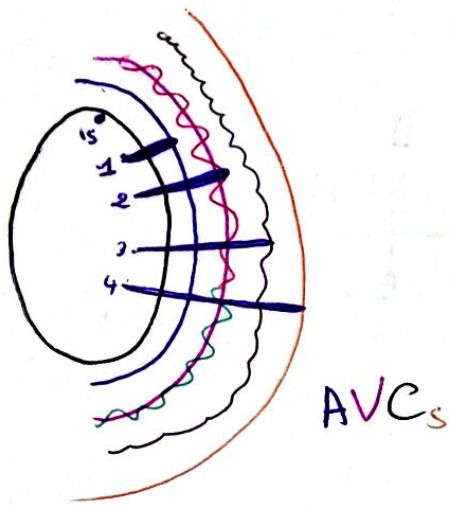
- |   |   |                             |
|---|---|-----------------------------|
| N | 0 | $\phi$                      |
|   | 1 | $\vee \textcircled{1}$      |
|   | 2 | $\vee \vee \textcircled{2}$ |

M ou 1

T



TNM 2009 Cancer du testicule



S. marqueurs tumoraux post op

LDH  $\rightarrow$  1,5 - 10

AFP  $\rightarrow$  1000 - 10 000

hCG  $\rightarrow$  5000 - 50 000

AVCS : A: Albuginée  
V Vaginale, Vx  
C Cordon spermaticque  
S Scrotum