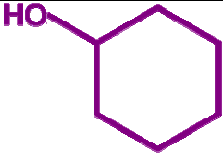

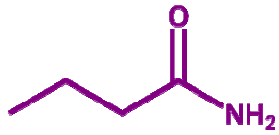
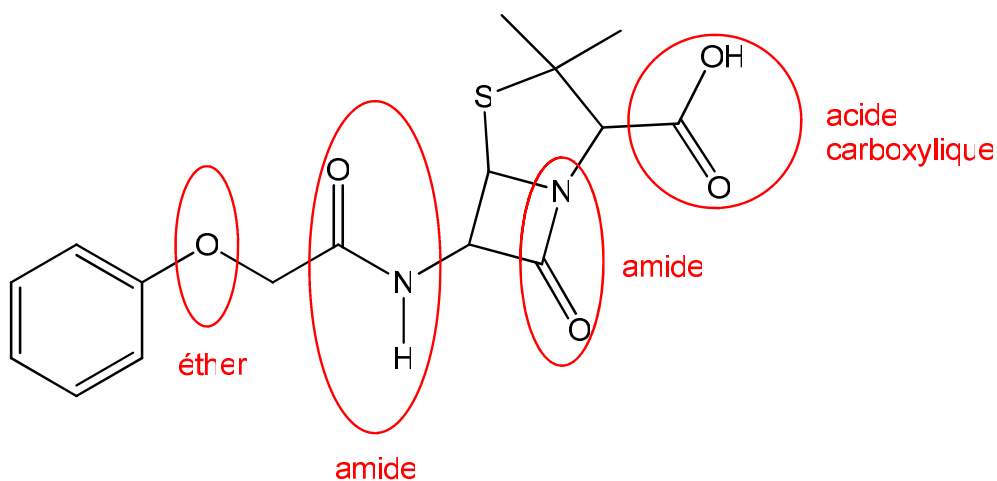
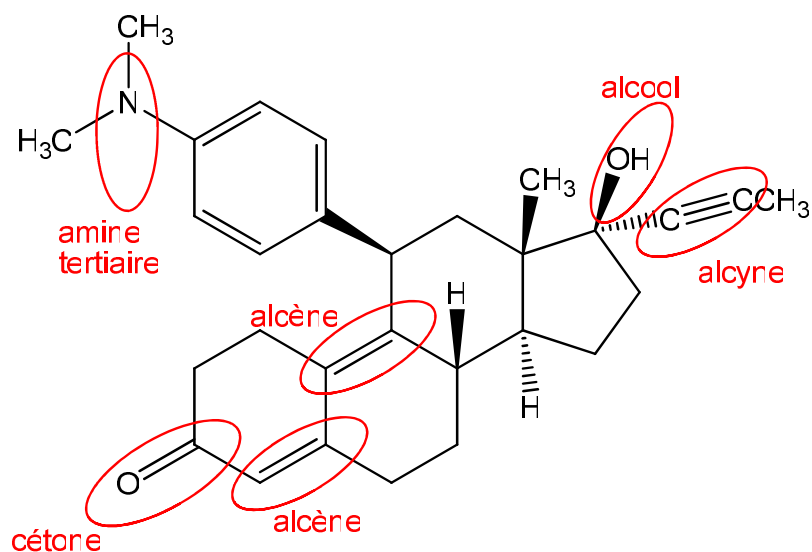
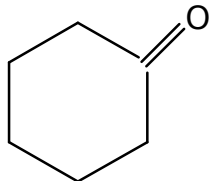


*Correction des Travaux dirigés (2010-2011)*Exercice n°1

Composé	Famille chimique
$(\text{CH}_3)_2\text{CHCOOH}$	Acide
$\text{CH}_3(\text{CH}_2)_4\text{COOCH}_2\text{CH}_3$	Ester
$(\text{CH}_3)_2\text{CHCH}_2\text{CHO}$	Aldéhyde
CH_3COCH_3	Cétone
	Alcool
	Alcool
$(\text{CH}_3)_2\text{CHCOOCH}_2\text{CH}_3$	Ester
$\text{CH}_3\text{CH}_2\text{CONH}_2$	Amide
	Amide
CH_4	Alcane

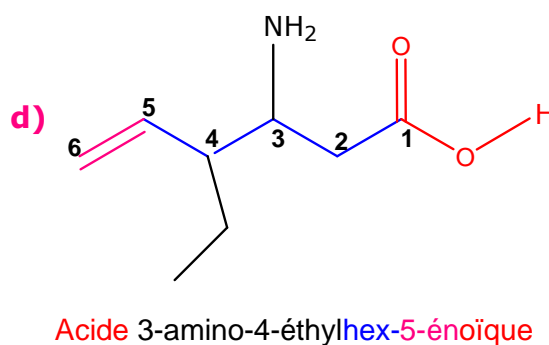
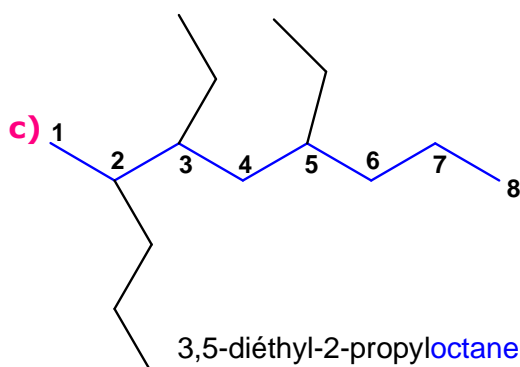
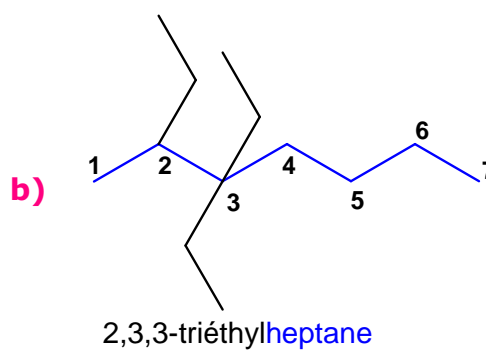
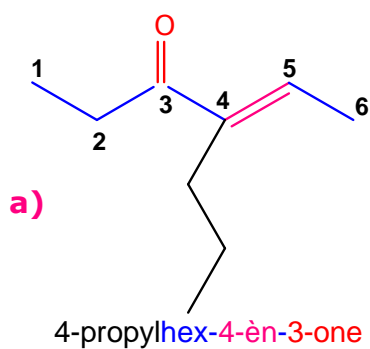
Exercice n°2

**Exercice n°3**

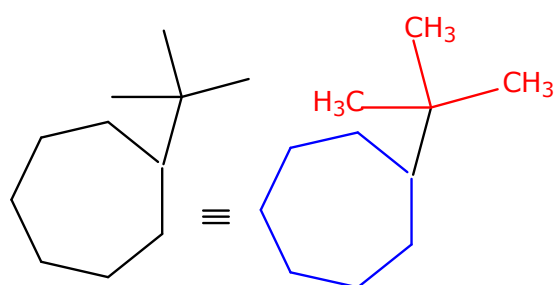
$\begin{array}{c} \text{CH}_3\text{-CH}_2\text{-C=O} \\ \\ \text{OH} \end{array}$	Acide propanoïque
$\begin{array}{c} \text{CH}_3\text{-CH-CH}_2\text{-OH} \\ \\ \text{NH}_2 \end{array}$	2-aminopropan-1-ol
$\text{CH}_3\text{-CH}_2\text{-CH}_2\text{-CH}_2\text{-CH}_3$	pentane
$\text{CH}_3\text{-CHCl-CH}_2\text{-CH}_2\text{-OH}$	3-chlorobutan-1-ol
$\begin{array}{c} \text{CH}_3\text{-CH-CH}_2\text{-CH}_3 \\ \\ \text{CH}_3 \end{array}$	2-méthylbutane
$\text{CH}_2=\text{CH-CH}_2\text{-CH=O}$	but-3-éнал
$\begin{array}{c} \text{CH}_3\text{-CH-CH}_2\text{-COOH} \\ \\ \text{NH}_2 \end{array}$	Acide 3-aminobutanoïque
$\text{CH}_3\text{-CCl}_2\text{-COOH}$	Acide 2,2-dichloropropanoïque
$\text{CH}_3\text{-CH(CH}_3\text{)-CH(CH}_3\text{)-CH}_2\text{-CH}_2\text{-CH}_3$	2,3-diméthylhexane
$\text{CH}_3\text{-CH=CH-CH(CH}_3\text{)-CH}_3$	4-méthylpent-2-ène
	Cyclohexanone

$\text{CH}_3\text{CH}_2\text{CH}_2\text{CH}_2\text{CH}_2\text{CH}_3$	hexane
$\text{CH}_3\text{CH}_2\text{CH}_2\text{CH}_2\text{COOH}$	Acide pentanoïque
$\text{CH}\equiv\text{C}-\text{CH}(\text{CH}_3)-\text{CH}_2-\text{CH}_3$	3-méthylpent-1-yne
$\text{CH}_3-\text{CO}-\text{CH}_3$	propan-2-one

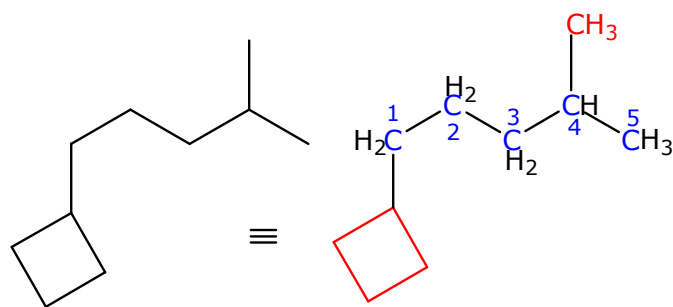
Exercice n°4



Exercice n°5



tert-butylcycloheptane



1-cyclobutyl-4-méthylpentane