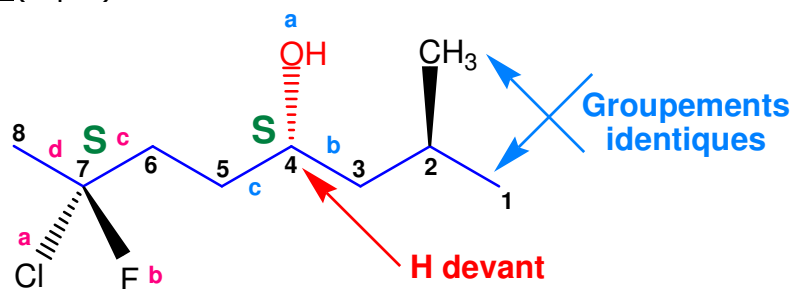
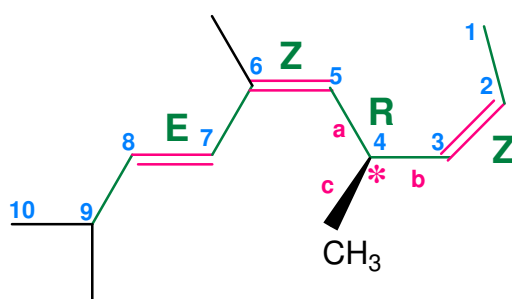


Corrigé de l'examen final en Chimie Organique

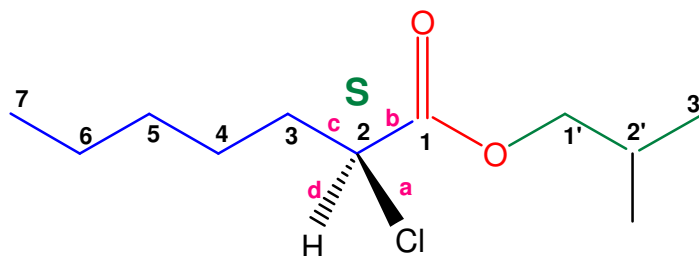
Exercice n°1 (9 pts)



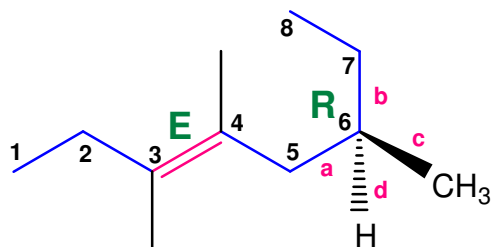
(4S, 7S) 7-chloro, 7-fluoro, 2-méthyl**octan-4-ol**



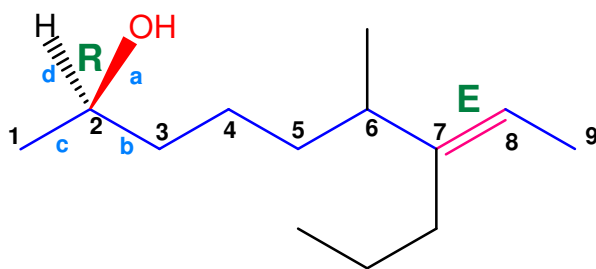
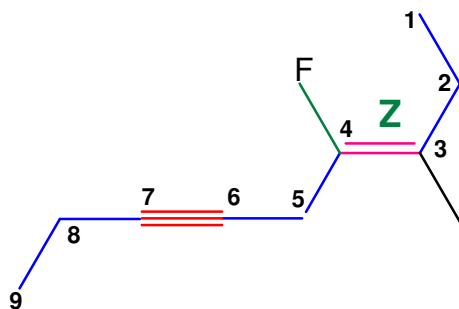
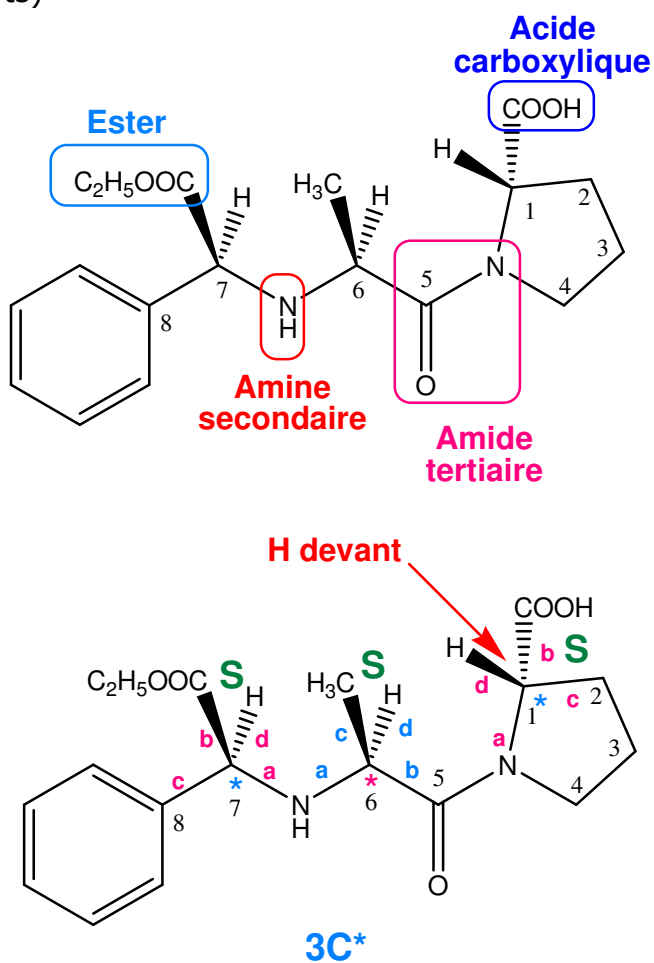
(2Z, 5Z, 7E, 4R) 4,6,9-trimethyl deca-**2,5,7-triene**



(2S) 2-chloro**heptanoate de 2-méthylpropyle**

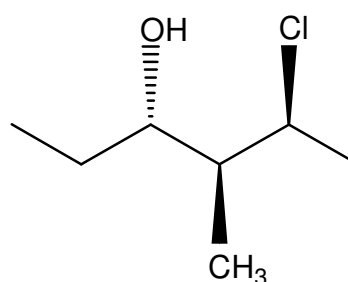
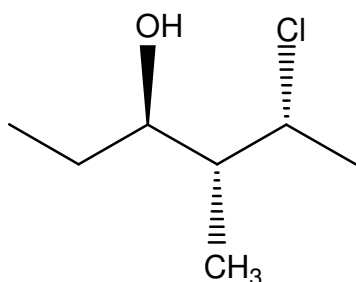


(3E, 6R) 3,4,6-triméthyl**oct-3-ène**

(2R, 7E) 6-méthyl 7-propyl **non-7-èn-2-ol**(3Z) 4-fluoro 3-méthyl **non-3-èn-6-yne****Exercice n°2** (6 pts)

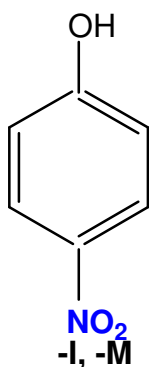
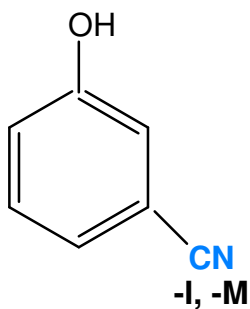
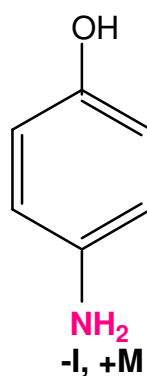
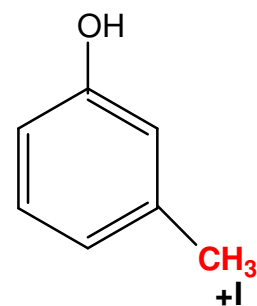
Exercice n°3 (2 pts)

Parmi les caractéristiques suivantes, indiquer celles qui s'appliquent à la paire de molécules suivantes :



- | | |
|------------------------------|------------------------|
| a. Composés identiques | f. Enantiomères |
| b. Isomères de constitution | g. Diastéréoisomères |
| c. Stéréoisomères | h. Composés méso |
| d. Isomères de conformation | i. Molécules chirales |
| e. Isomères de configuration | j. Molécules achirales |

C E F I

Exercice n°4 (3 pts)**A****B****C****D**

C < D < B < A

