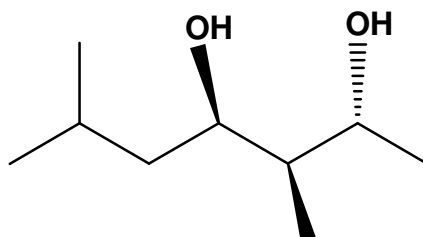


*Rattrapage en Chimie Organique (90 mn)*

*Cheating won't get you anywhere in life.*

*The key to getting ahead is getting started*

Nommer la molécule suivante, en précisant les configurations:

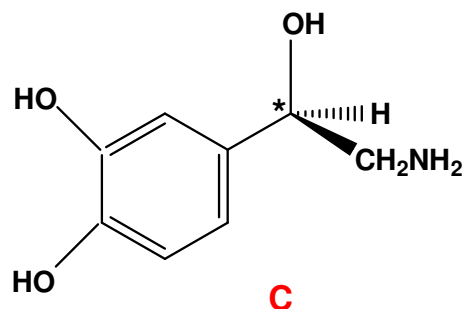
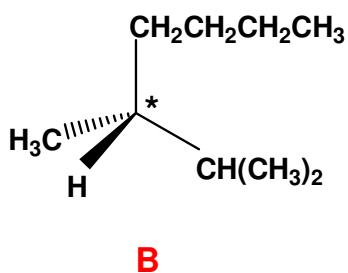
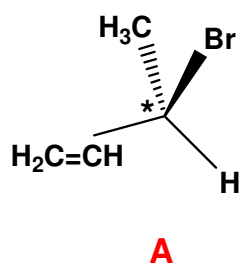


Donner les formules topologiques des molécules suivantes, en justifiant vos réponses:

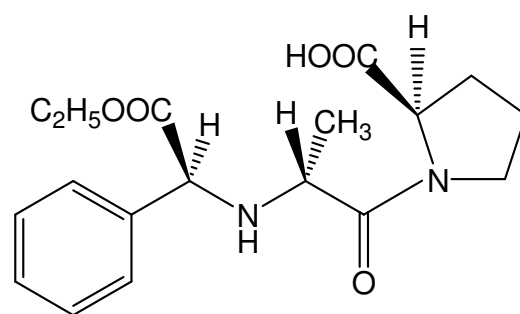
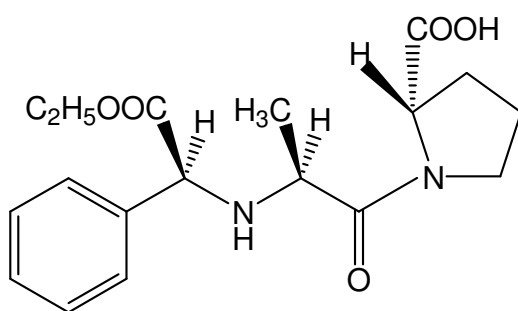
a) (3R) 3-méthyl 3-hexanol

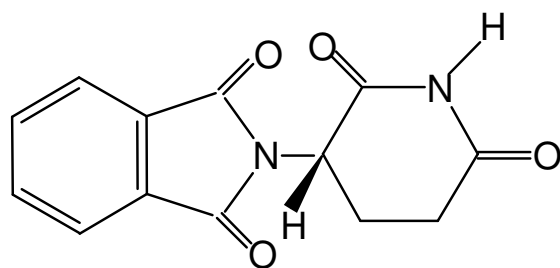
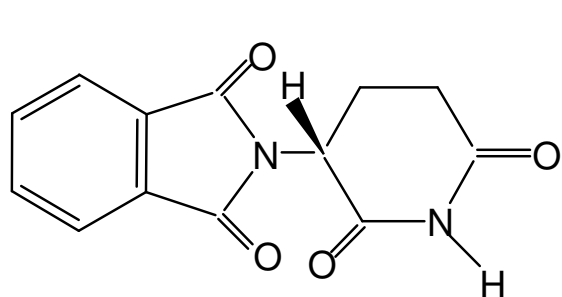
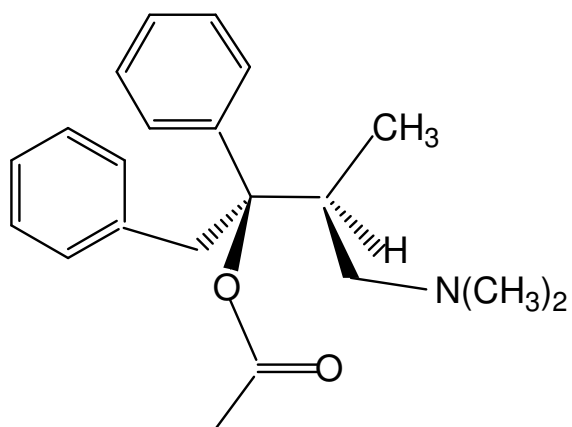
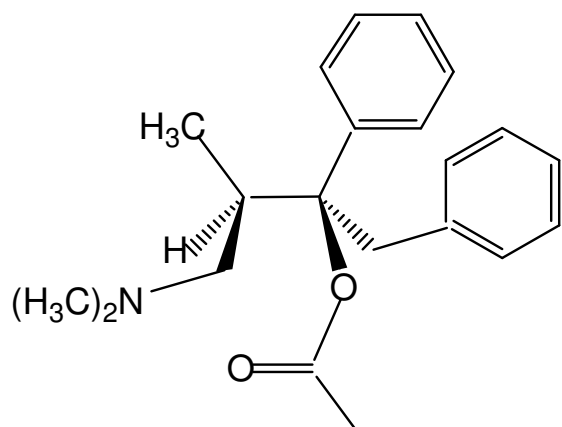
b) Acide (4S, 2E) 4-chloro 3-éthyl pent-2-énoïque

Des 3 molécules suivantes, laquelle a la configuration **S** ? Justifiez vos réponses.



Quelle relation d'isomérisie (identiques, différents, isomères de constitution, énantiomères, diastéréoisomères) existe-t-il pour chaque paire de molécules ?





**Il est interdit d'écrire au stylo rouge**